

This excellent black and white sketch of the entrance to Wallaga Lake Station was done by Ida Hoskins

The Largest River.

The Murray (marked on some maps as the Hume), which rises in the Australian Alps, divides New South Wales from Victoria, enters South Australia and empties into the Southern Ocean. With its tributaries—the Darling, Murrumbidgee and Lachlan—it drains an area of 414,000 square miles.

The Highest Mountain.

Mount Kosciusko, in the New South Wales portion of the Australian Alps. Cloaked in snow for about six months of the year, it rises to 7,328 ft. Kosciusko was discovered and named by the Polish scientist, Strzelecki, in honour of the Polish patriot.

What We Produce.

Australia has about 126,890,000 sheep. Merinos are the most numerous breed.

Average wool clip is about 1,200,000,000 lb. annually or about 10 lb. per full size fleece shorn.

Of the 15,586,000 cattle, about 4,859,000 are dairy cattle.

Butter production in the year 1953-54 was 160,117 tons.

Production of cheese in the year 1953-54 was 49,230 tons.

Beef and veal production in 1953-54 was 706,329 tons, bone-in weight.

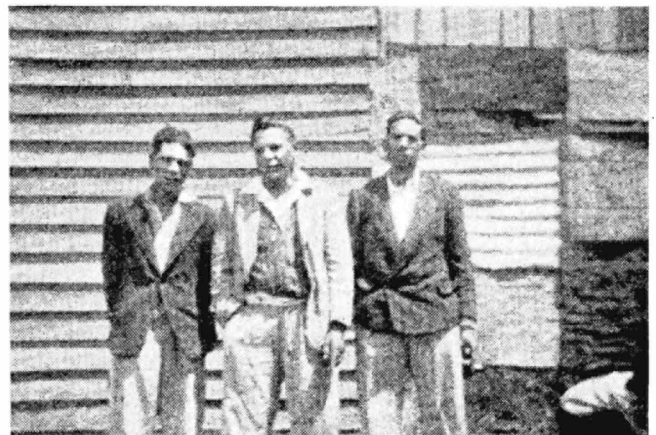
Mutton and lamb production was 360,956 tons, bone-in weight in 1953-54.

Production of pig-meats in the year 1953-54 was about 84,400 tons (bone-in weight).

In 1953-54, 1,254,000 tons of raw sugar were produced.

Wool sales in 1953-54 earned £390,714,585.

At March 31, 1954, there were 823,000 horses in Australia.



These three young fellows are Jack Livermore, Len Edwards and Vincent Connors, of Tingha.