

Hello Kids,

Well it's really getting into winter now, isn't it? It's an awful pity because we can't play cricket or go swimming and indeed there always seems to be so many more pleasant things we can do in the summer.

How do you like the nice drawing on this page. It wins a special prize for, Kevin Boney, of Urunga. Congratulations to you, Kevin. Someone said the drawing looked like me, but I think they were just being unkind. I've just had a very nice letter from Carol Donovan, of Bowraville, and when the poor old thing wrote to me she was in bed with the Mumps. (Better now, I hope?).



This fine drawing by Kevin Boney, of Urunga, won him, a special prize.

Carol writes the nicest letters, nice and long and full of interesting news. Thanks indeed, Carol. Hope to hear from you again soon.

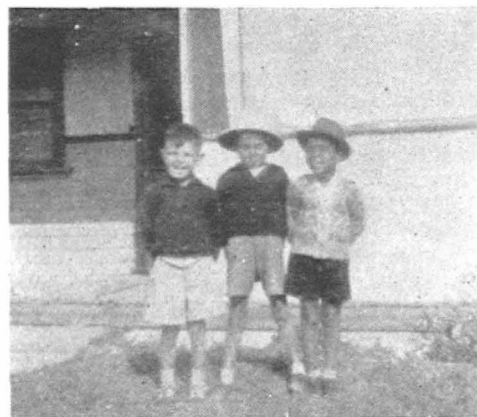
Also had a nice long letter from Jimmy Quinlin of Aberdeen. Jimmy said, "Aberdeen is a small town about 30 miles from Singleton. There are two big factories here, the butter factory and the abattoirs. The abattoirs is the most important because it supplies the district with meat. Trains come from Sydney daily to take the meat away for export and canning purposes. The meat is frozen before it leaves. The tops of the carriages are opened and men pack ice in so the meat will still be frozen when it arrives in Sydney. Most of the people here are now painting their homes and getting them in order again after the floods. I came here from Bellbrook to seek employment and work as a grocer in a self service store. It is a nice clean job and I like it very much. I hope that one day I may be able to work my self up to the position of Manager.

I would like to congratulate my fellow student, Harry Penrith on the good name he made for Kinchela and for himself and hope he keeps up the good work."

Thanks a lot, Jimmy, a very nice letter which wins you a prize. Well Kids, that's all for this month, so once again, lots of fun,

Your sincere pal,

**Pete.**



Richard and Smokey Murray and Tony Kirby, of Balranald.